

Forward-Looking Imaging Sonar

At 900 kHz, the P900-45 is an ideal sonar for underwater detection and identification operations such as IED detection on ship hulls and other underwater structures. The P900-45 is specifically designed to increase search rates and effectiveness during underwater operations in low visibility conditions. BlueView worked closely with commercial and US Navy divers to develop the P900-45, a compact sonar that offers both mid-range detection and close-range identification capabilities. The P900-45 is available as a stand-alone sensor module, or as an integrated component on a number of commercially available ROV, diver hand-held, and boat mountable systems. Custom vehicle integration solutions are also available.



APPLICATIONS

- Hull Inspection - IED Detection
- Search and Recovery
- Underwater Inspection

BENEFITS

- High-definition imagery
- Compact / low power
- Not affected by motion (0-7 Knots)
- Designed for integration
- Cost effective

FEATURES

- Standard Ethernet interface
- Plug-and-play sonar heads
- Easy-to-use Windows Software
- Software Development Kit

WORKS FROM BOTH MOVING AND STATIONARY PLATFORMS

- Patrol Boats
- Micro ROVs
- Work Class ROVs
- Diver Hand-Held Systems
- Tripods
- AUVs

Custom Engineered-to-Order solutions also available. Contact BlueView for more details.

Specifications

SONAR

- Field of View: 45°x 20°
- Max Range: 55m (180 ft.)
- Beam Width: 1°x 20°
- Number of Beams: 256
- Beam Spacing: 0.18°
- Range Resolution: 1 in.
- Update Rate: Up to 15 Hz
- Frequency: 900 kHz

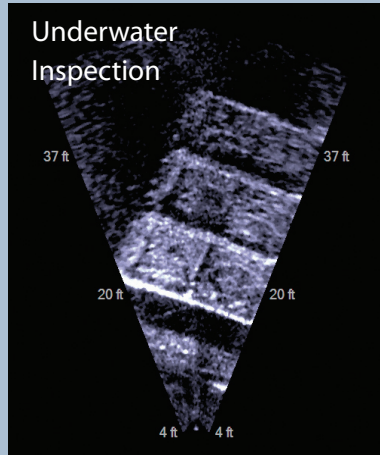
INTERFACE

- Coms: Ethernet
- Voltage: 12-48 VDC
- Power: 10 Watts

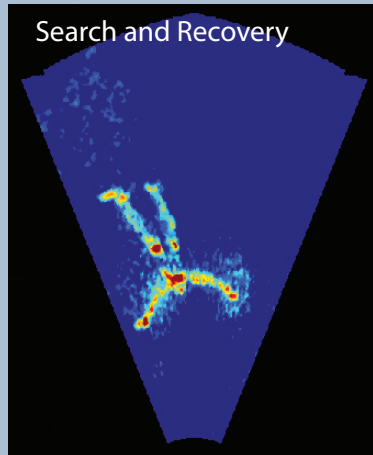
MECHANICAL

- Weight in Air: 4.1 lbs.
- Weight in Water: 1.0 lb
- Depth Rating: 1,000m (3,280 ft.)
- Size: 7.0 in x 4.0 in OD

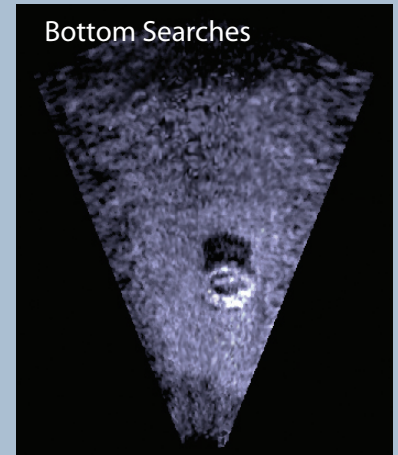
BlueView's P900 Series Family of Forward-Looking Imaging Sonar use revolutionary technology to provide streaming video-like imagery from both stationary and moving platforms.



This image shows the bottom side of a floating dock at close range. The dock's structure and features are clearly visible in even the murkiest conditions.



In this sonar image, the body of a swimmer is clearly visible. Once detected, the operator can then use the sonar to monitor and direct recovery operations.



Quickly locate and navigate to objects, even in low visibility conditions. The above sonar image shows a tire located during an ROV-based search operation.

SOFTWARE
OPTIONS

BlueView's easy-to-use Windows-based ProViewer Software comes standard with all BlueView sonar systems. A powerful Software Development Kit (SDK) is also available upon request.

PROVIEWER SOFTWARE FEATURES

- Easy-to-Use
- Extensive data review controls
- Export JPGs and AVI movies
- Length measurement tool
- Auto intensity adjustment

SDK SOFTWARE FEATURES

- Low level control of sonar
- File I/O controls
- Bitmap and R-Theta outputs
- Helpful example code
- Both Windows and Linux versions available

OPTIONAL
ETHERNET
EXTENDER
KIT



- 3 Watts @ 12-48 VDC
- Depth Rating: 1000 ft
- Size: 6.0 in x 4.0 in OD
- 2000' Plus over SingleTwisted Pair
- 6 Mbps

DIAGRAM OF P900-45

