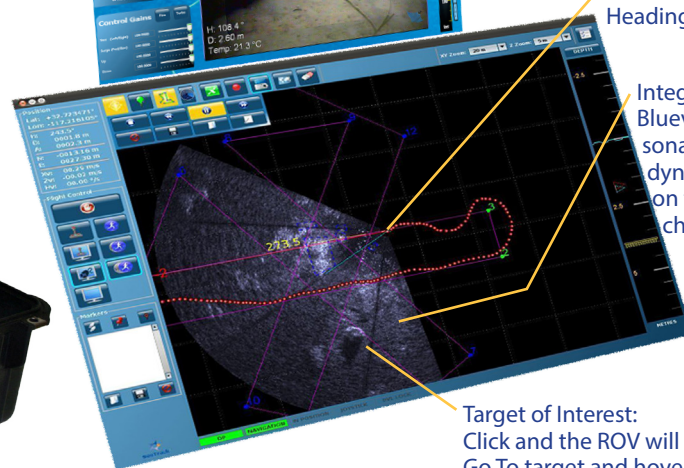


## AUTONOMOUS CONTROL COPILOT RI BY SEEBYTE

VideoRay CoPilot RI by SeeByte performs target reacquisition and identification missions in support of amphibious landings, EOD MCM operations, harbors and shipping lane (Q-route) clearance.



**VideoRay Cockpit:**  
Provides ROV telemetry including video, water temperature, ROV health indicators and more



**ROV Location:**  
Heading 273.5 degrees

**Integrated Sonar:**  
Blueview 900-130 sonar imagery is dynamically overlaid on the operations chart

**Target of Interest:**  
Click and the ROV will automatically Go To target and hover

CoPilot RI is Common Operator Interface (COIN) and SeeTrack™ compliant, allowing for the automated geodetic processing of AUV, SSS, diver, and GIS data to maneuver autonomously to pre-designated underwater locations.

Easily transported by small boat or RHIB to a secure GPS launch point, CoPilot RI can safely investigate underwater objects of interest in a Mine Danger Area (MDA). CoPilot RI self-propels and navigates using pre-planned data to commence target reacquisition and identification with high definition sonar and low light video. CoPilot RI allows personnel to maintain a safe standoff distance from hazardous items, keeping the diver out of the water and

giving the operational commander additional capacity of limited diver resources.

While other ROVs provide some limited search capability, RI CoPilot takes this capability to the next level, allowing personnel to specify a particular area to be searched and enables the ROV to perform the search autonomously.



# COPILOT RI BY SEEBYTE

CoPilot RI can perform a wide range of underwater search missions and relay information in real-time to provide the following immediate benefits:

- Autonomous Localization, Identification, and Reacquisition of mine-like threats
- Common Operator Interface Navy (COIN) compliant to provide mission planning, real time monitoring and post-processing software tool kit for rapid on-site analysis and fusion of sensor data, including side scan sonar, imaging sonar, and video from unmanned, towed, tethered systems and autonomous underwater vehicles (AUV) (COIN is integrated with the US Navy's Mine Warfare and Environmental Decision Aids Library (MEDAL))
- Pre-programmable to conduct lawnmower trajectories and provide high-resolution sensor data to assure a 100% coverage rate with point and click target marking and reacquisition
- Rapidly assess and mitigate underwater hazards without placing a diver in the water or unnecessarily tagging out a ship
- Removes divers from in water search to reduce personnel "Time-on-Target"
- Frees personnel for other tasks reducing manpower requirements
- Man-portable for rapid, easy deployment
- Low maintenance
- COTS system with 2,200+ ROVs sold and delivered world-wide
- Established logistics and maintenance support capabilities

## Configuration includes:

Doppler Velocity Log (DVL)  
BlueView P900-130 sonar  
VideoRay integration (DVL and BlueView sonar)  
CoPilot RI software

## Features include:

- Manual, Station-Keeping, Survey, and ROV Cruise Modes
- Navigation fuses GPS and Velocity updates from DVL to provide precise position updates
- Simple point-and-click PC interface over charts to command ROV
- One click "Go to Target" automation
- One-click target tracking application launch
- Easy target selection and tracking - user defined target size parameters
- Streaming target relative velocity data
- Full integration with VideoRay Cockpit software

\* Pro 4 ROV system required - not included.

